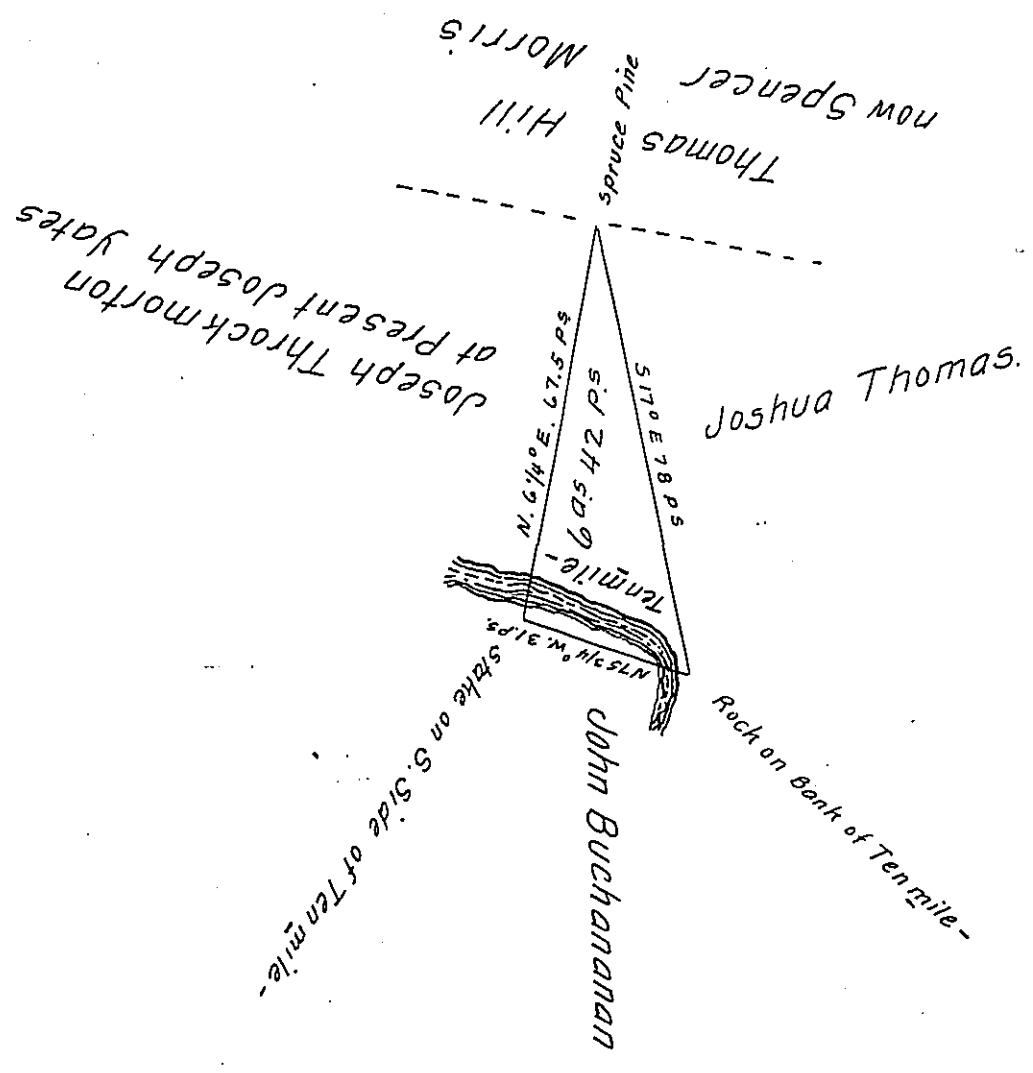


S 17 E	78.0	N	S	E	W	D.M.D	
N 75 3/4 W	31.0	7.6	74.6	22.7	30.0	- 22.7	16834
N 67 1/4 E	67.5	67.0		7.3		- 15.4	
		74.6	74.6	30.8	30.0	+ 7.3	+ 489.1
							- 117.0
							- 117.0

+2182.5
 117.0
 2) 2065.5
 166) 1032.7 (665 72 ps 16 percent
 960
 72 ps
 Allowance of
 leaves 665 42 ps

If you find any fault now
 point it out, plainer



Plot of a piece of Land in Franklin Township Greene Co. Pa Contain-
 ing Six A^s & forty two perches and allowance of unimproved Land.
 Surveyed in Pursuance of a Warrant to J. W. Scott. dated Jan. 24. 1865.
 and calling for three Acres improved Land. Surveyed Jan. 20. 1870.
 Above you will find table of the Survey

George Hoge Jr. County
 Surveyor.

IN TESTIMONY that the above is a copy of the original remaining on file in
 the Department of Internal Affairs of Pennsylvania, made
 conformably to an Act of Assembly approved the 16th day of
 February, 1833, I have hereunto set my Hand and caused
 the Seal of said Department to be affixed at Harrisburg,
 this twentieth day of February 1907.

Loae R Brown
 Secretary of Internal Affairs.